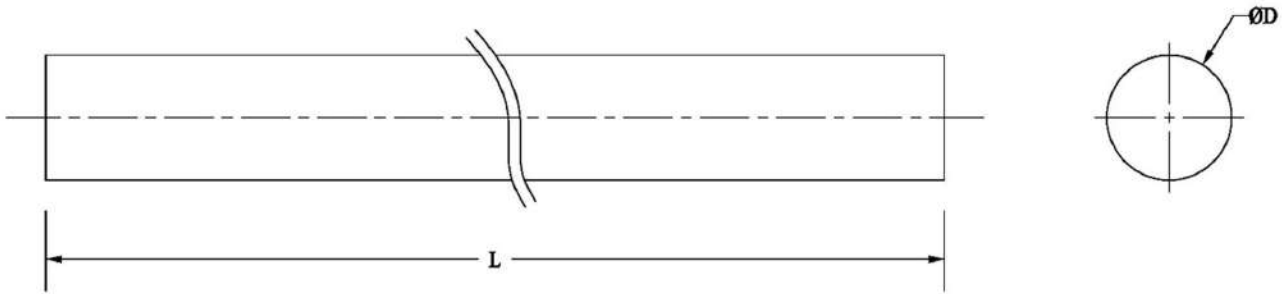


Electrically & thermally non-conductive:

FRP is electrically non-conductive leading to increased safety compared to conductive materials (i.e., metal).



POWERMAT CODE	Dia D	wt. (Kg/meter)
PROD 006	6.0	0.070
PROD 010	10.0	0.150
PROD 012	12.0	0.265
PROD 013	12.7	0.300
PROD 016	16.0	0.405
PROD 019	19.0	0.538
PROD 020	20.0	0.670
PROD 025	25.0	0.930
PROD 028	28.0	1.233
PROD 038	38.0	2.272
PROD 045	44.45	3.186
PROD 050	50.8	3.933

- All Dimensions are in mm only.
- Tolerance is applicable as per DIN Standard 2768.