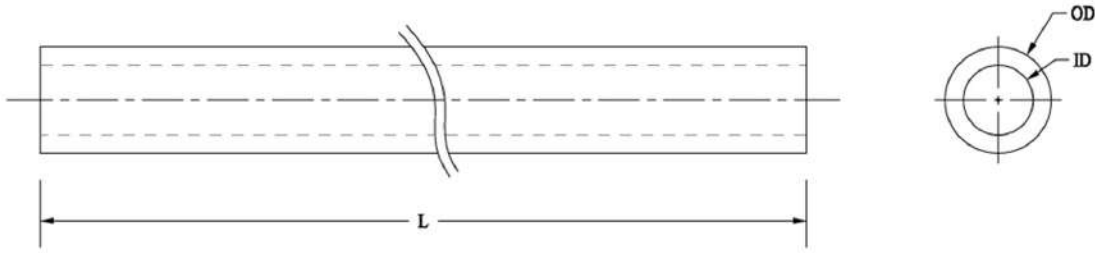


**Electrically & thermally non-conductive:**

FRP is electrically non-conductive leading to increased safety compared to conductive materials (i.e., metal).



Powermat code	Inner Diameter (ID), mm	Outer Diameter (OD), mm	Wt. (Kg / meter)
EPT 0410	4.5	9.5	0.135
EPT 0919	9.5	19.1	0.460
PT 0610	6.5	10.0	0.100
PT 0812	8.5	12.0	0.135
PT 1016	10.5	16.0	0.240
PT 1219	12.5	19.0	0.305
PT 1220	12.5	20.0	0.405
PT 2025	20.5	25.0	0.450
PT 3238	31.75	38.1	0.660
PT 3845	38.1	44.5	0.830

- Customization is possible in OD & ID depending on requirements.
- All Dimensions are in mm only.
- Tolerance is applicable as per DIN Standard 2768.